

TRUST SUPER TUNING SYSTEM AIMING AT REAL COMPETITIONS.

600₀ WARNING METER

Covers Part Numbers 16000803, 16000804
and 16000822

*GR***edity**

EXHAUST TEMP METER

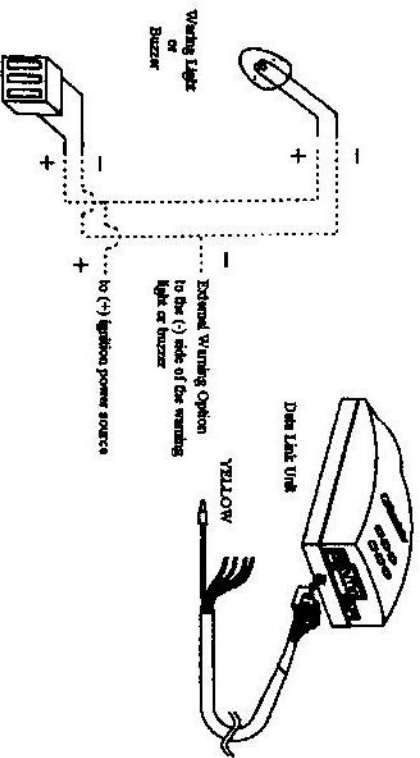
Instruction Manual

TRUST CO., LTD.

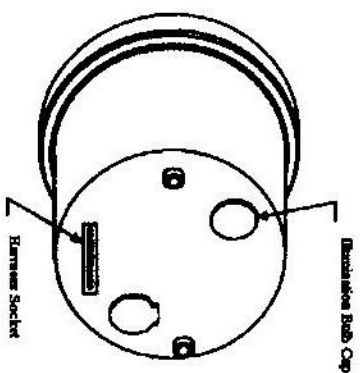
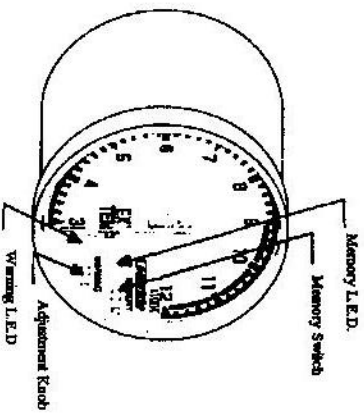
MADE IN JAPAN.

Installation:

External Warning Option Output



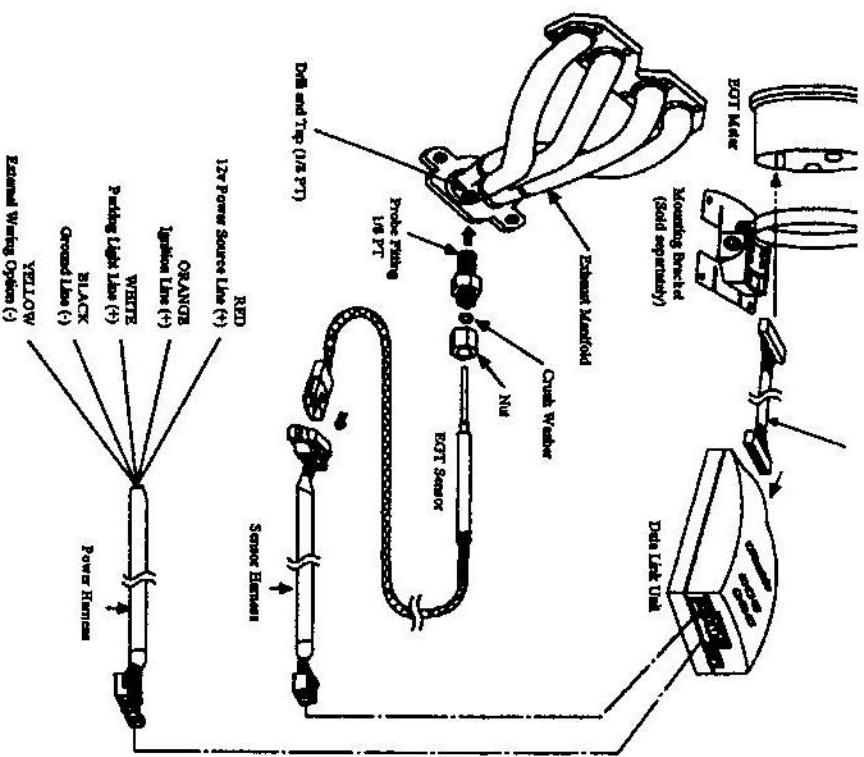
Operation:



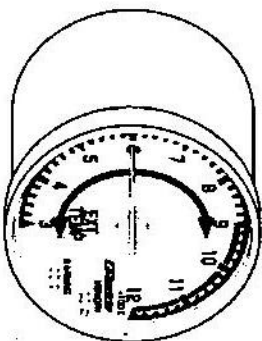
- **Memory Switch**
 - Used to switch to "Peak" mode
 - Used to reset the memory
- **Memory L.E.D.**
 - Illuminates
 - Flashes when resetting the memory
- **Adjustment Knob**
 - Used to adjust the warning point (setting)
- **Warning L.E.D.**
 - Illuminates when in the warning mode
 - Flashes when the harness is disconnected or when there is a "short" in the electrical system

Wing Diagram

Install the EGT sensor so that 5-20mm of the probe is in the center of the exhaust pipe.

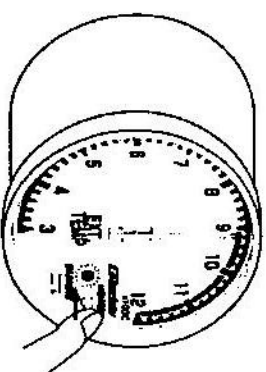


Real-time Meter Mode:



Display the exhaust gas temperature

Peak Temperature Mode:

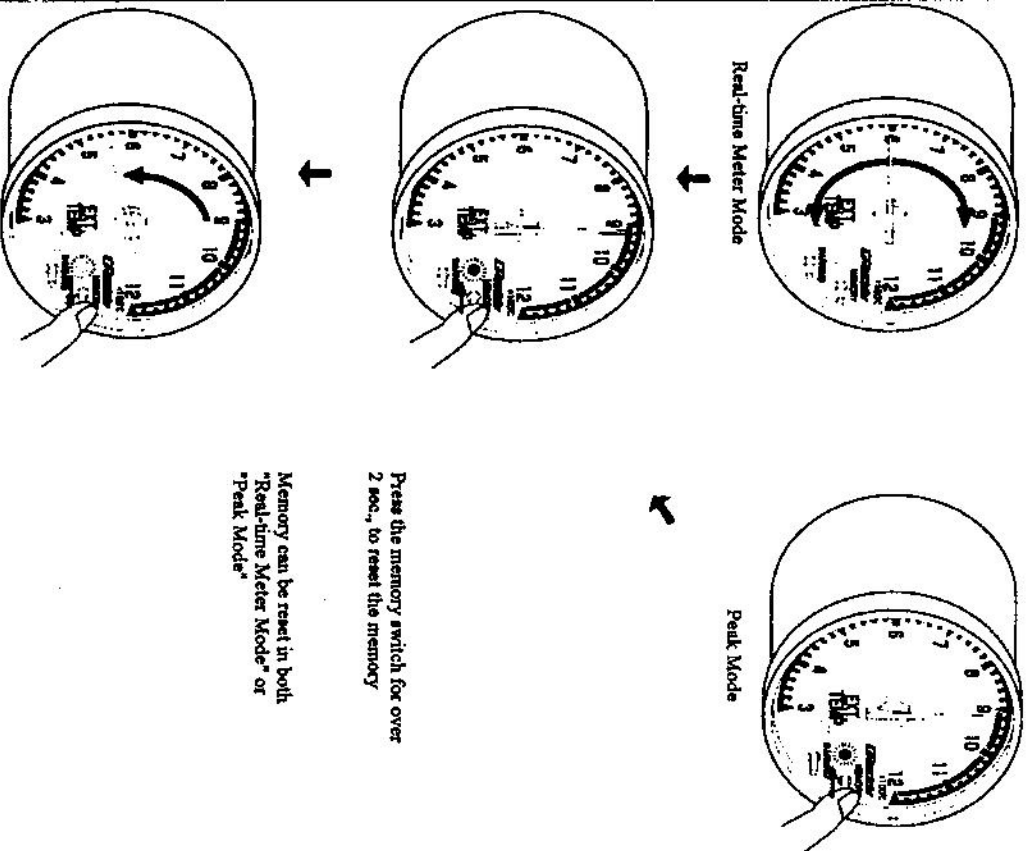


When "peak mode" is turned on, the memory LED will illuminate and the meter will display the peak temperature achieved.

Press the memory switch again, to return to "real-time mode"

Operation:

Resetting the Memory



Installation:

Meter Mounting

I Important

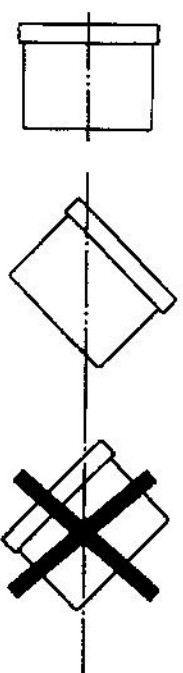
- When looking for a location to mount the meter, be sure not to have the meter interfere with the driver's view of the road or other important instruments.

Note

Mounting brackets for these warning meters are available for simple installation.
(GReddy Meter Band 369601 or GReddy Meter Holder 369602)

A Caution

- Never mount the meter facing downward. Always mount the meter horizontally or facing upward. Mounting the meter facing downward can cause the meter to malfunction.



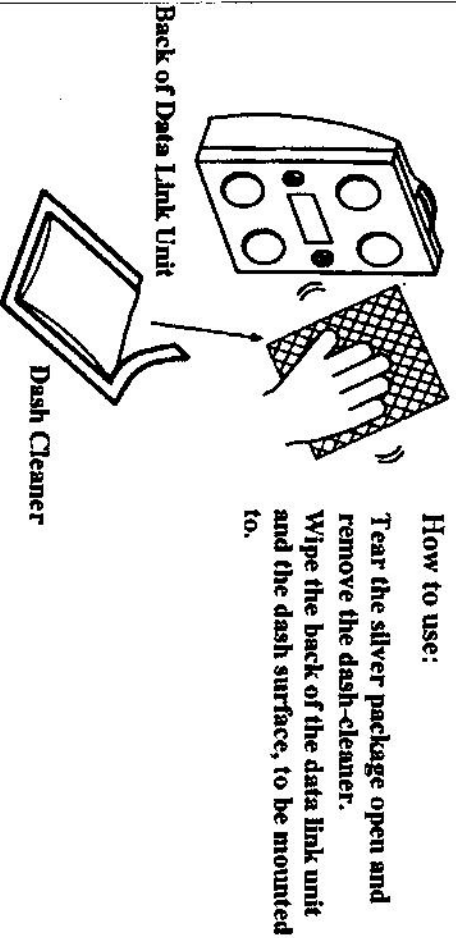
Installation:

Data Link Unit Mounting

When using the provided double-sided tape to mount the data link unit, clean the mounting surfaces with the provided dash cleaner

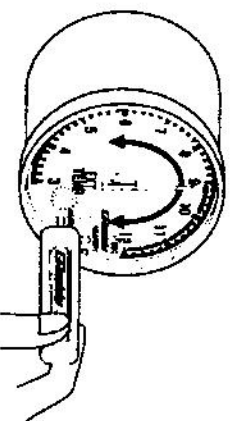
Caution

- ⚠ Do not use the dash cleaner on any other products.
- ⚠ If there is dirt, dust, or oil on the mounting surface, the double-sided tape may not adhere to the dash.



Operation:

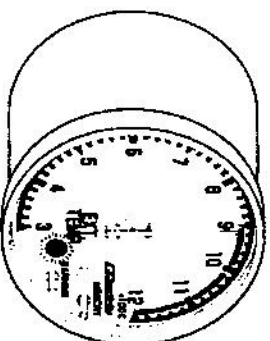
Setting the Warning Point



To set the warning point, use the provided socket tool to turn the Adjust Knob to the desired warning value

After making the adjustment, wait for 5 sec. and the meter will program the new setting and return to "Real-time Meter Mode"

Warning Mode



When the needle of the meter reaches the programmed warning point, the "Warning LED" (and optional warning light and/or buzzer) will activate. This will remain until the needle drops below the warning point.

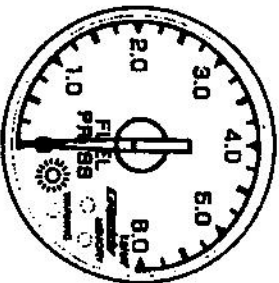
Caution

- ⚠ Do not adjust the Warning Point when Driving.
- ⚠ Always remove the adjusting socket tool after making adjustments

Operation:

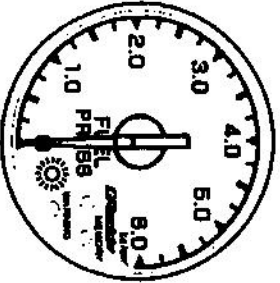
Check Mode

Bad Harness Connection Check Feature



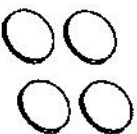
When there is a bad sensor or connection the warning LED will flash quickly.
(flash, flash -- flash, flash --flash, flash)
This feature does not check the connection on power harness.

Short Circuit Check Feature

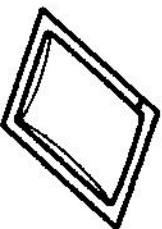


When there is a short circuit in the sensor or harness, the warning LED will flash slow.
(flash -- flash -- flash)
This feature does not check for short circuits on power harness.

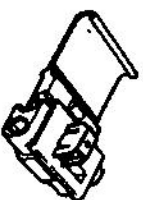
Parts List:



[8] Double-sided Tape
1pc.



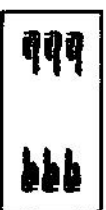
[9] Mounting Cleaner
(for double-sided tape)
1pc.



[10] Electrical Tap
4pcs.



[11] Wire Tie 15cm
4pcs.



[12] Harness Labels Set
1pc.

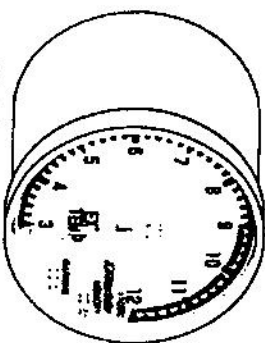


[13] Instruction Manual
1pc.

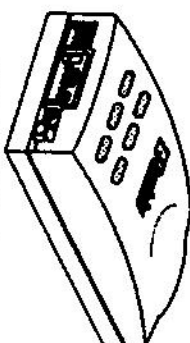


[14] Warning Adjusting Socket
1pc.

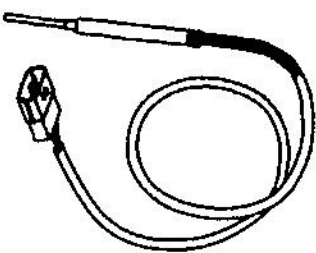
Parts List:



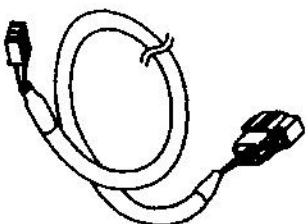
[1] Exhaust Temp Meter 1pc.



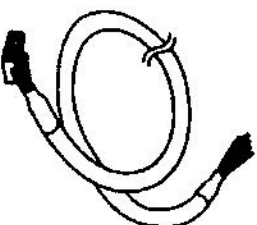
[2] Data Link Unit 1pc.



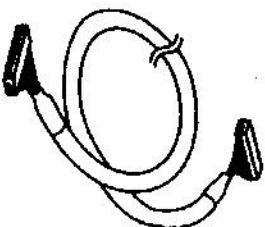
[3] Temp. Sensor 60cm 1pc.



[4] Sensor Harness



[5] Electrical Harness 0.5m 1pc.



[6] Sensor Harness 3m 1pc.



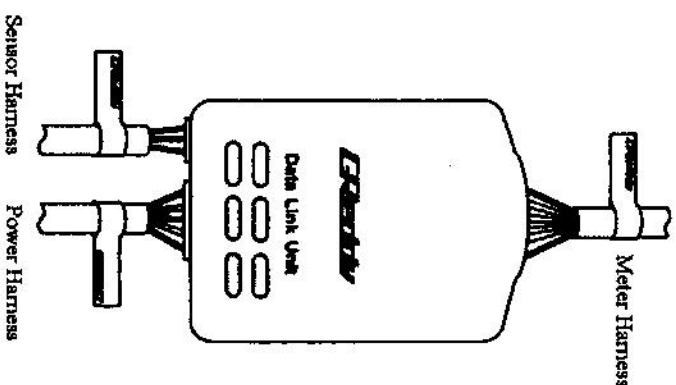
[7] Sensor Fitting 1pc.

Suggestions:

How to use the Harness Labels

If you are installing more than one warning meter, it is suggested to use the provided decal set to label each of the harness for each individual meter type.

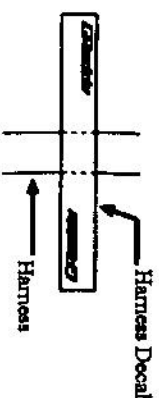
The decal set includes three labels: 1) Meter harness 2) Sensor Harness 3) Power Harness. Install as shown below.



How to apply:

Peel label off from the decal sheet

Apply as shown below



Fold the label onto the harness as shown below.

